



Section 11

Galvanised Flanged Fittings

Edition 3

Material Specifications

Galvanised Flanged Irrigation Fittings										
WALL THICKNESS FOR FITTINGS										
	3" - 80mm	4" - 100mm	5" - 125mm	6" - 150mm	8" - 200mm	10" - 250mm	12" - 300mm	14" - 350mm	16" - 400mm	18" - 450mm
GENERAL PURPOSE - SGP	4.2mm	4.5mm	4.5mm	5.0mm	5.8mm	-	-	-	-	-
HEAVY DUTY - STD WGT	5.5mm	6.0mm	6.5mm	7.1mm	8.1mm	9.3mm	9.5mm	9.5mm	9.5mm	9.5mm
FLANGE - TAB D	12mm	12mm	13mm	13mm	13mm	16mm	19mm	22mm	22mm	25mm
TABLE D FLANGE BOLTING DETAILS										
NUMBER OF HOLES	4	4	8	8	8	8	12	12	12	12
DIAMETER OF BOLT HOLES	18mm	18mm	18mm	18mm	18mm	22mm	22mm	26mm	26mm	26mm
FIXED FLANGE FASTENER SIZE & THREAD	M16 x 45	M16 x 45	M16 x 45	M16 x 45	M16 x 50	M20 x 50	M20 x 50	M24 x 60	M24 x 60	M24 x 75
LOOSE FLANGE FASTENER SIZE & THREAD	M16 x 60	M16 x 60	M16 x 60	M16 x 60	M16 x 65	M20 x 65	M20 x 65	M24 x 80	M24 x 80	M24 x 100

* Other flange tables available - please enquire with our sales staff.

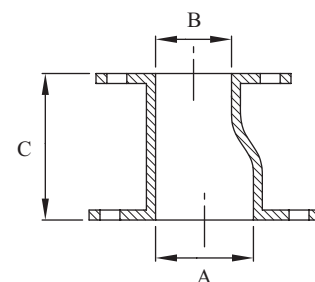
* Addition of priming sockets to some fittings may require an extra charge. Confirmation at point of sale.

* Not all products are available ex-stock. Confirmation at point of sale.

* AAP also offers a fabrication service for custom made fittings - simply provide us a drawing with dimensions

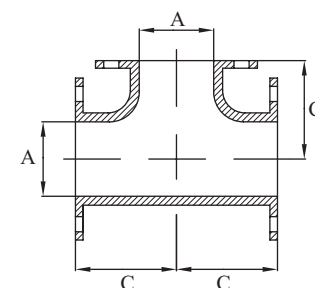
Galvanised Eccentric Flanged Reducer

Galvanised Eccentric Flanged Reducer (Std Weight - Table D)					
AAP CODE	IMPERIAL SIZE	A	B	C	APPROX KG/PC
IRE5040	2 x 1 1/2	52.5	40.9	76.2	3.3
IRE6540	2 1/2 x 1 1/2	62.6	40.9	88.9	3.2
IRE6550	2 1/2 x 2	62.6	52.5	88.9	3.6
IRE8050	3 x 2	77.9	52.5	88.9	4.3
IRE8065	3 x 2 1/2	77.9	62.6	88.9	4.5
IRE10050	4 x 2	102.3	52.5	101.6	5.4
IRE10065	4 x 2 1/2	102.3	62.6	101.6	5.6
IRE10080	4 x 3	102.3	77.9	101.6	6.1
IRE125100	5 x 4	128.1	102.3	127.0	8.5
IRE15080	6 x 3	154.1	77.9	139.7	9.5
IRE150100	6 x 4	154.1	102.3	139.7	9.9
IRE150125	6 x 5	154.1	128.1	139.7	11.1
IRE200100	8 x 4	202.7	102.3	152.4	14.1
IRE200125	8 x 5	202.7	128.1	152.4	14.5
IRE200150	8 x 6	202.7	154.1	152.4	15.1
IRE250150	10 x 6	254.5	154.1	177.8	22.6
IRE250200	10 x 8	254.5	202.7	177.8	24.6
IRE300200	12 x 8	304.9	202.7	203.2	31.7
IRE300250	12 x 10	304.9	254.5	203.2	35.6
for PRIMING SOCKETS add -PS## to part number					
1	1 1/4	1 1/2	2	2 1/2	3

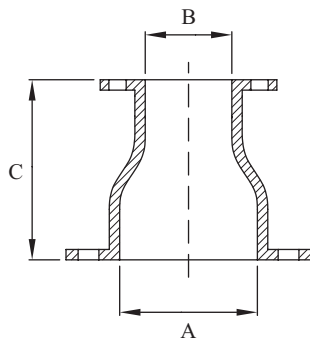


Galvanised Flanged Tee

Galvanised Flanged Tee (Std Weight - Table D)				
AAP CODE	IMPERIAL SIZE	A	C	APPROX KG/PC
IT80	3	77.9	85.9	8.8
IT100	4	102.3	104.6	12.2
IT125	5	128.1	124.0	17.8
IT150	6	154.1	142.7	23.2
IT200	8	202.7	177.8	33.9
IT250	10	254.5	215.9	60.7
IT300	12	304.9	254.0	80.6
for PRIMING SOCKETS add -PS## to part number				
1	1 1/4	1 1/2	2	2 1/2

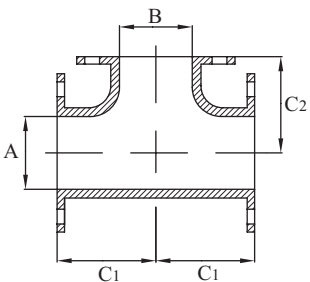


Galvanised Concentric Flanged Reducer



Galvanised Concentric Flanged Reducer (Std Weight - Table D)					
AAP CODE	IMPERIAL SIZE	A	B	C	APPROX KG/PC
IRC5032	2 x 1 1/4	52.5	35.0	76.2	2.8
IRC5040	2 x 1 1/2	52.5	40.9	76.2	3.0
IRC6540	2 1/2 x 1 1/2	62.6	40.9	88.9	3.2
IRC6550	2 1/2 x 2	62.6	52.5	88.9	3.6
IRC8025	3 x 1	77.9	26.6	88.9	3.7
IRC8040	3 x 1 1/2	77.9	40.9	88.9	4.0
IRC8050	3 x 2	77.9	52.5	88.9	4.3
IRC8065	3 x 2 1/2	77.9	62.6	88.9	4.5
IRC10050	4 x 2	102.3	52.5	101.6	5.4
IRC10065	4 x 2 1/2	102.3	62.6	101.6	5.6
IRC10080	4 x 3	102.3	77.9	101.6	6.1
IRC12580	5 x 3	128.1	77.9	127.0	7.9
IRC125100	5 x 4	128.1	102.3	127.0	8.5
IRC15065	6 x 2 1/2	154.1	62.6	139.7	9.1
IRC15080	6 x 3	154.1	77.9	139.7	9.5
IRC150100	6 x 4	154.1	102.3	139.7	9.9
IRC150125	6 x 5	154.1	128.1	139.7	11.1
IRC200100	8 x 4	202.7	102.3	152.4	14.1
IRC200125	8 x 5	202.7	128.1	152.4	14.5
IRC200150	8 x 6	202.7	154.1	152.4	15.1
IRC250150	10 x 6	254.5	154.1	177.8	22.6
IRC250200	10 x 8	254.5	202.7	177.8	24.3
IRC300150	12 x 6	304.9	154.1	203.2	30.3
IRC300200	12 x 8	304.9	202.7	203.2	31.7
IRC300250	12 x 10	304.9	254.5	203.2	35.3
for PRIMING SOCKETS add -PS## to part number					
1	1 1/4	1 1/2	2	2 1/2	3

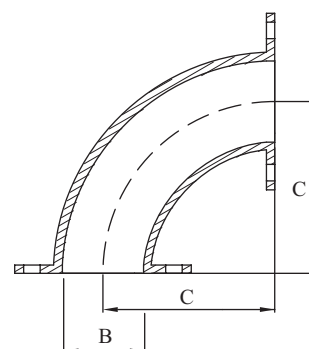
Galvanised Flanged Reducing Tee



Galvanised Flanged Reducing Tee (Std Weight - Table D)						
AAP CODE	IMPERIAL SIZE	A	B	C1	C2	APPROX KG/PC
IT8050	3 x 2	60.3	52.5	85.9	82.6	7.8
IT10080	4 x 3	88.9	77.9	104.6	98.6	9.7
IT150100	6 x 4	114.3	102.3	142.7	130.0	19.9
IT200150	8 x 6	168.3	154.1	177.8	168.1	25.1
for PRIMING SOCKETS add -PS## to part number						
1	1 1/4	1 1/2	2	2 1/2	3	
** Other branch size available upon request						

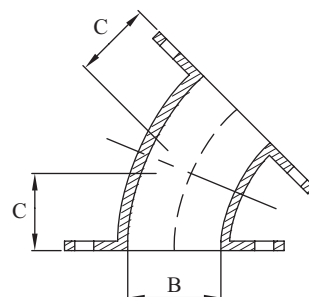
Galvanised Fixed Flanged 90 Deg Elbow (SGP)

Galvanised Fixed Flanged 90 Deg Elbow (SGP Fixed - Table D)					
AAP CODE	IMPERIAL SIZE	B	C	APPROX KG/PC	
IEF90-80	3	80.7	114.3	5.6	
IEF90-100	4	105.3	152.4	7.9	
IEF90-125	5	130.8	190.5	11.2	
IEF90-150	6	155.2	228.6	14.4	
IEF90-200	8	204.7	304.8	24.0	
for PRIMING SOCKETS add -PS## to part number					
1	1 1/4	1 1/2	2	2 1/2	3



Galvanised Fixed Flanged 45 Deg Elbow (SGP)

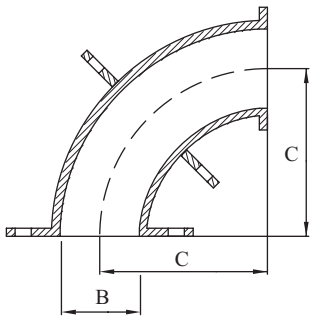
Galvanised Fixed Flanged 45 Deg Elbow (SGP Fixed - Table D)					
AAP CODE	IMPERIAL SIZE	B	C	APPROX KG/PC	
IEF45-80	3	80.7	47.3	4.6	
IEF45-100	4	105.3	63.1	6.3	
IEF45-125	5	130.8	78.9	8.9	
IEF45-150	6	155.2	94.7	11.2	
IEF45-200	8	204.7	126.3	18.6	
for PRIMING SOCKETS add -PS## to part number					
1	1 1/4	1 1/2	2	2 1/2	3



Galvanised Loose Flanged 90 Deg Elbow (SGP)



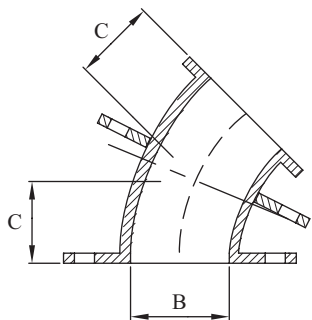
Galvanised Loose Flanged 90 Deg Elbow (SGP Loose - Table D)				
AAP CODE	IMPERIAL SIZE	B	C	APPROX KG/PC
IEL90-80	3	80.7	114.3	6.1
IEL90-100	4	105.3	152.4	8.5
IEL90-125	5	130.8	190.5	11.8
IEL90-150	6	155.2	228.6	15.4
IEL90-200	8	204.7	304.8	25.0
for PRIMING SOCKETS add -PS## to part number				
1	1 1/4	1 1/2	2	2 1/2



Galvanised Loose Flanged 45 Deg Elbow (SGP)

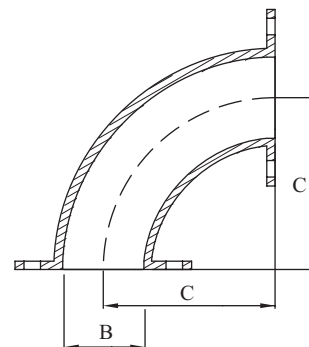


Galvanised Loose Flanged 45 Deg Elbow (SGP Loose - Table D)				
AAP CODE	IMPERIAL SIZE	B	C	APPROX KG/PC
IEL45-80	3	80.7	47.3	4.9
IEL45-100	4	105.3	63.1	6.7
IEL45-125	5	130.8	78.9	9.4
IEL45-150	6	155.2	94.7	11.7
IEL45-200	8	204.7	126.3	19.2
for PRIMING SOCKETS add -PS## to part number				
1	1 1/4	1 1/2	2	2 1/2



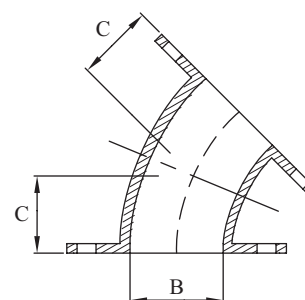
Galvanised Fixed Flanged 90 Deg Elbow (STD)

Galvanised Fixed Flanged 90 Deg Elbow (STD Fixed - Table D)					
AAP CODE	IMPERIAL SIZE	B	C	APPROX KG/PC	
IEF90-80H	3	77.9	114.3	6.0	
IEF90-100H	4	102.3	152.4	9.0	
IEF90-125H	5	128.1	190.5	13.6	
IEF90-150H	6	154.1	228.6	17.7	
IEF90-200H	8	202.7	304.8	29.4	
IEF90-250H	10	254.5	381.0	58.3	
IEF90-300H	12	304.9	457.2	75.3	
IEF90-350H	14	336.5	533.0	113.0	
IEF90-400H	16	387.3	610.0	142.6	
IEF90-450H	18	437.9	686.0	178.4	
for PRIMING SOCKETS add -PS## to part number					
1	1 1/4	1 1/2	2	2 1/2	3

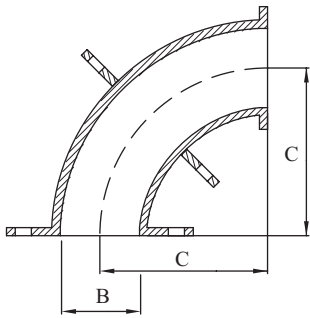


Galvanised Fixed Flanged 45 Deg Elbow (STD)

Galvanised Fixed Flanged 45 Deg Elbow (STD Fixed - Table D)					
AAP CODE	IMPERIAL SIZE	B	C	APPROX KG/PC	
IEF45-80H	3	77.9	50.8	5.0	
IEF45-100H	4	102.3	63.5	6.8	
IEF45-125H	5	128.1	79.2	10.4	
IEF45-150H	6	154.1	95.2	12.9	
IEF45-200H	8	202.7	127.0	20.3	
IEF45-250H	10	254.5	158.8	35.9	
IEF45-300H	12	304.9	190.5	48.2	
IEF45-350H	14	336.5	222.0	76.5	
IEF45-400H	16	387.3	254.0	93.6	
IEF45-450H	18	437.9	286.0	118.4	
for PRIMING SOCKETS add -PS## to part number					
1	1 1/4	1 1/2	2	2 1/2	3

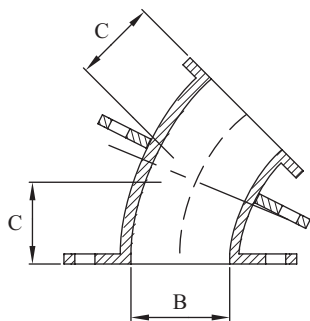


Galvanised Loose Flanged 90 Deg Elbow (STD)



Galvanised Loose Flanged 90 Deg Elbow (Std Loose - Table D)					
AAP CODE	IMPERIAL SIZE	B	C	APPROX KG/PC	
IEL90-80H	3	77.9	114.3	6.5	
IEL90-100H	4	102.3	152.4	9.5	
IEL90-125H	5	128.1	190.5	14.2	
IEL90-150H	6	154.1	228.6	18.5	
IEL90-200H	8	202.7	304.8	30.2	
IEL90-250H	10	254.5	381.0	59.5	
IEL90-300H	12	304.9	457.2	76.8	
IEL90-350H	14	336.5	533.0	114.5	
IEL90-400H	16	387.3	610.0	144.5	
IEL90-450H	18	437.9	686.0	180.0	
for PRIMING SOCKETS add -PS## to part number					
1	1 1/4	1 1/2	2	2 1/2	3

Galvanised Loose Flanged 45 Deg Elbow (STD)

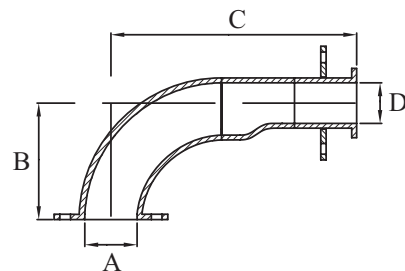


Galvanised Loose Flanged 45 Deg Elbow (Std Loose - Table D)					
AAP CODE	IMPERIAL SIZE	B	C	APPROX KG/PC	
IEL45-80H	3	77.9	50.8	5.5	
IEL45-100H	4	102.3	63.5	7.1	
IEL45-125H	5	128.1	79.2	10.8	
IEL45-150H	6	154.1	95.2	13.6	
IEL45-200H	8	202.7	127.0	20.9	
IEL45-250H	10	254.5	158.8	36.7	
IEL45-300H	12	304.9	190.5	49.0	
IEL45-350H	14	336.5	222.0	77.7	
IEL45-400H	16	387.3	254.0	95.0	
IEL45-450H	18	437.9	286.0	119.5	
for PRIMING SOCKETS add -PS## to part number					
1	1 1/4	1 1/2	2	2 1/2	3

Galvanised Loose Flanged Reducing Elbow

Galvanised Loose Flanged Reducing Elbow (Table D)						
AAP CODE	IMPERIAL SIZE	A	B	C	D	APPROX KG/PC
IER8040	3 x 1 1/2	77.9	124.5	241.5	40.9	12.6
IER8050	3 x 2	77.9	127.4	248.3	52.5	12.8
IER8065	3 x 2 1/2	77.9	130.0	254.9	62.6	13.1
IER10050	4 x 2	102.3	165.5	299.0	52.5	17.3
IER10065	4 x 2 1/2	102.3	168.1	305.8	62.6	17.7
IER10080	4 x 3	102.3	171.9	310.3	77.9	18.5
IER12580	5 x 3	128.1	210.0	373.3	77.9	26.5
IER125100	5 x 4	128.1	216.1	382.3	102.3	27.1
IER15065	6 x 2 1/2	154.1	244.3	420.5	62.6	31.8
IER15080	6 x 3	154.1	248.1	424.6	77.9	32.1
IER150100	6 x 4	154.1	254.2	433.6	102.3	33.1
IER150125	6 x 5	154.1	260.6	440.3	128.1	35.1
IER200100	8 x 4	202.7	330.4	522.5	102.3	50.2
IER200125	8 x 5	202.7	336.8	529.2	128.1	51.5
IER200150	8 x 6	202.7	343.3	529.2	154.1	52.7
for PRIMING SOCKETS add -PS## to part number						
1	1 1/4	1 1/2	2	2 1/2	3	

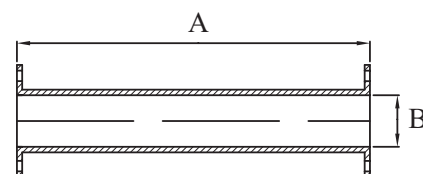
**Larger Sizes are available upon request



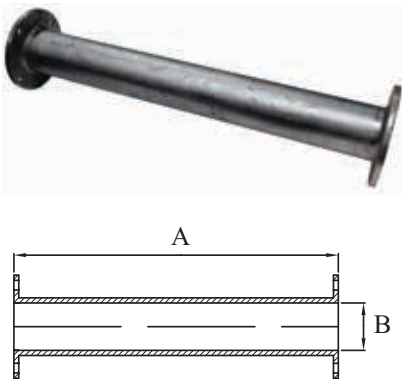
Galvanised Flanged Pipe

Galvanised Flanged Pipe (Heavy Duty - Table D)				
AAP CODE	IMPERIAL SIZE	A	B	APPROX KG/PC
GFP80X900	3 x 36	900.0	90.0	14.1
GFP80X1800	3 x 72	1800.0	90.0	24.2
GFP80X2700	3 x 108	2700.0	90.0	34.4
GFP80X3600	3 x 144	3600.0	90.0	44.5
GFP80X4500	3 x 180	4500.0	90.0	54.7
GFP80X5500	3 x 220	5500.0	90.0	65.9
GFP100X900	4 x 36	900.0	116.0	18.2
GFP100X1800	4 x 72	1800.0	116.0	31.4
GFP100X2700	4 x 108	2700.0	116.0	44.7
GFP100X3600	4 x 144	3600.0	116.0	57.9
GFP100X4500	4 x 180	4500.0	116.0	71.1
GFP100X5500	4 x 220	5500.0	116.0	85.8
GFP125X900	5 x 36	900.0	144.0	23.4
GFP125X1800	5 x 72	1800.0	144.0	39.9
GFP125X2700	5 x 108	2700.0	144.0	56.4
GFP125X3600	5 x 144	3600.0	144.0	72.9
GFP125X4500	5 x 180	4500.0	144.0	89.4
GFP125X5500	5 x 220	5500.0	144.0	107.8
GFP150X900	6 x 36	900.0	167.0	38.5
GFP150X1800	6 x 72	1800.0	167.0	69.1
GFP 150X2700	6 x 108	2700.0	167.0	99.7

Continues on the next page

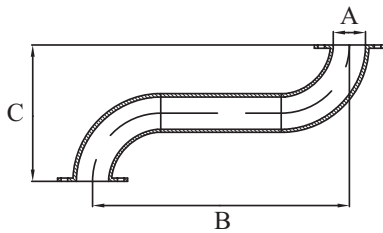


Galvanised Flanged Pipe - Continued



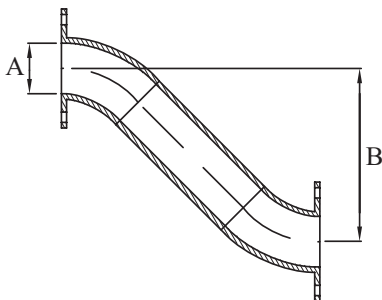
Galvanised Flanged Pipe (Heavy Duty - Table D)					
AAP CODE	IMPERIAL SIZE	A	B	APPROX KG/PC	
GFP150X3600	6 x 144	3600.0	167.0	130.4	
GFP150X4500	6 x 180	4500.0	167.0	161.0	
GFP150X5500	6 x 220	5500.0	167.0	195.0	
GFP200X900	8 x 36	900.0	221.0	41.1	
GFP200X1800	8 x 72	1800.0	221.0	71.7	
GFP200X2700	8 x 108	2700.0	221.0	102.4	
GFP200X3600	8 x 144	3600.0	221.0	133.0	
GFP200X4500	8 x 180	4500.0	221.0	163.6	
GFP200X5500	8 x 220	5500.0	221.0	197.7	
for PRIMING SOCKETS add -PS## to part number					
1	1 1/4	1 1/2	2	2 1/2	3

Galvanised 90 Deg Gooseneck



Galvanised 90 Deg Gooseneck (Heavy Duty - Table D)					
AAP CODE	IMPERIAL SIZE	A	B	C	APPROX KG/PC
GGN80-90	3	77.9	600.0	228.6	12.3
GGN100-90	4	102.3	750.0	304.8	19.5
GGN125-90	5	128.1	900.0	381.0	29.8
GGN150-90	6	154.1	900.0	456.0	37.4
GGN200-90	8	202.7	900.0	609.6	58.2
for PRIMING SOCKETS add -PS## to part number					
1	1 1/4	1 1/2	2	2 1/2	3

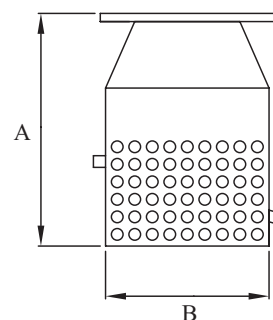
Galvanised 45 Deg Gooseneck



Galvanised 45 Deg Gooseneck (Heavy Duty - Table D)					
AAP CODE	IMPERIAL	A	B	APPROX KG/PC	
GGN80-45	3	77.9	600.0	11.5	
GGN100-45	4	102.3	750.0	17.8	
GGN125-45	5	128.1	900.0	26.6	
GGN150-45	6	154.1	900.0	32.5	
GGN200-45	8	202.7	900.0	49.6	
for PRIMING SOCKETS add -PS## to part number					
1	1 1/4	1 1/2	2	2 1/2	3

Galvanised Quick Release Footvalve

Galvanised Quick Release Footvalve (Swing Flap - Table D)					
AAP CODE	IMPERIAL SIZE	A	B	MESH HOLE SIZE	APPROX KG/PC
VFG80	3	294.0	187.0	11.0	6.5
VFG100	4	303.0	220.0	11.0	10.0
VFG125	5	435.0	260.0	11.0	15.5
VFG150	6	560.0	285.0	11.0	23.5
VFG200	8	665.0	340.0	11.0	35.5
VFG250	10	750.0	405.0	11.0	51.0
VFG300	12	835.0	460.0	11.0	65.5
SPRING TO SUIT FOOT VALVE					
VFGSPR					



Stainless Steel Quick Release Footvalve

Stainless Steel Quick Release Footvalve (Swing Flap - Table D)					
AAP CODE	IMPERIAL SIZE	A	B	MESH HOLE SIZE	APPROX KG/PC
SSVF80	3	294.0	187.0	11.0	6.0
SSVF100	4	303.0	220.0	11.0	7.0
SSVF125	5	435.0	260.0	11.0	13.5
SSVF150	6	560.0	285.0	11.0	17.0
SSVF200	8	665.0	340.0	11.0	24.0
SSVF250	10	750.0	405.0	11.0	50.0
SSVF300	12	835.0	460.0	11.0	63.0
SPRING TO SUIT FOOT VALVE					
VFGSPR					

