



Section 10

Camlocks

(Aluminium, Stainless Steel 316, Nyglass, Polypropylene)

Edition 2

Specifications

Camlocks are also known as Cam and Groove Fittings

Used where quick, convenient connection and disconnection of piping and hose is required.

Industries – Irrigation, Pumping, Hose Distributors, Bulk Tankers, Water Carriers, General Industry.

Medium – Water, Oil, Powders, some Hydrocarbons and Chemicals (check compatibility charts).

Threads - The threads are cut according to ISO 228

Maximum Temperature – NBR (Buna) Gasket 100 degree Celcius.

Spare Parts – AAP have available a range of spare parts to suit the camlocks, such as Brass Handles (code CBH...), Handle Pins (code CP...), and NBR Gaskets (code CGN...).

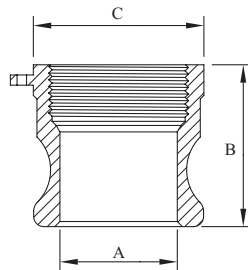
| Camlocks | | |
|---------------------------|--|--|
| MATERIAL | TYPICAL APPLICATION | DESCRIPTION |
| ALUMINIUM DIECAST | GENERAL USE / AG / INDUSTRIAL | MANUFACTURED USING THE DIE-CASTING METHOD. THIS THE MOST COMMON / ECONOMICAL OF THE ALUMINIUM RANGE USED FOR GENERAL AIR / WATER APPLICATIONS. |
| POLY PROPYLENE (BLACK) PP | AG SPRAYING EQUIPMENT / CHEMICAL INDUSTRY | USED EXTENSIVELY THROUGHOUT THE CHEMICAL AND AGRICULTURAL SECTOR. |
| NY-GLASS (YELLOW) | AG SPRAYING EQUIPMENT / CHEMICAL INDUSTRY | GLASS FILLED NYLON. ALTERNATIVE TO POLY PROPYLENE. |
| STAINLESS STEEL 316 | FOOD INDUSTRY / OFFSHORE / CHEMICAL INDUSTRY | SAND CAST STAINLESS STEEL. FULLY WELDABLE. |

| WORKING PRESSURE OF CAMLOCKS | | |
|------------------------------|-------------------------------------|-------------------------|
| SIZE RANGE (mm) | ALUMINIUM, STAINLESS, BRONZE, BRASS | POLY PROPYLENE, NYGLASS |
| 15 | 1034kPa | 862kPa |
| 20-50 | 1724kPa | 862kPa |
| 65 | 1034kPa | 690kPa |
| 75 | 862kPa | 517kPa |
| 100 | 690kPa | 517kPa |
| 125 | 517kPa | N/A |
| 150 | 517kPa | N/A |

| PRODUCT SUMMARY | |
|-----------------|-----------------------------|
| TYPE A | Male Camlock x Female BSP |
| TYPE B | Female Camlock x Male BSP |
| TYPE C | Female Camlock x Hosebarb |
| TYPE D | Female Camlock x Female BSP |
| TYPE E | Male Camlock x Hosebarb |
| TYPE F | Male Camlock x Male BSP |
| TYPE DC | Dust Cap |
| TYPE DP | Dust Plug |

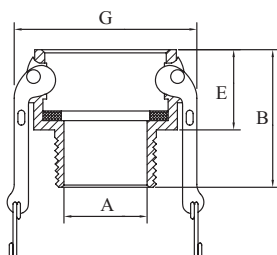
Type A Camlock - Male Camlock X Female BSP

| Type A Camlock - Male Camlock X Female BSP | | | | | | | |
|--|-----------------|---------------|------|----|-----|------------------|-----------------------|
| AAP CODE | | IMPERIAL SIZE | A | B | C | ALLUMINIUM KG/PC | STAINLESS STEEL KG/PC |
| ALUMINIUM | STAINLESS STEEL | | | | | | |
| CAL15A | CSS15A | 1/2 | 21 | 41 | 32 | 0.02 | 0.04 |
| CAL20A | CSS20A | 3/4 | 21 | 41 | 32 | 0.04 | 0.09 |
| CAL25A | CSS25A | 1 | 24 | 52 | 40 | 0.06 | 0.11 |
| CAL32A | CSS32A | 1 1/4 | 28.5 | 54 | 48 | 0.09 | 0.2 |
| CAL40A | CSS40A | 1 1/2 | 36 | 57 | 56 | 0.12 | 0.3 |
| CAL50A | CSS50A | 2 | 45 | 62 | 67 | 0.14 | 0.36 |
| CAL65A | CSS65A | 2 1/2 | 56.5 | 71 | 83 | 0.21 | 0.58 |
| CAL80A | CSS80A | 3 | 73 | 71 | 96 | 0.26 | 0.7 |
| CAL100A | CSS100A | 4 | 98 | 82 | 127 | 0.58 | 1.07 |
| CAL150A | CSS150A | 6 | 150 | 79 | 183 | 0.9 | 1.66 |



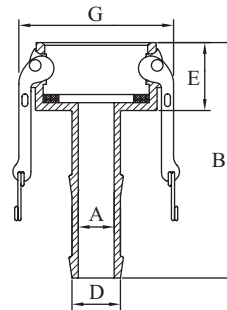
Type B Camlock - Female Camlock X Male BSP

| Type B Camlock - Female Camlock X Male BSP | | | | | | | | |
|--|-----------------|---------------|-----|-----|----|-----|------------------|-----------------------|
| AAP CODE | | IMPERIAL SIZE | A | B | E | G | ALLUMINIUM KG/PC | STAINLESS STEEL KG/PC |
| ALUMINIUM | STAINLESS STEEL | | | | | | | |
| CAL15B | CSS15B | 1/2 | 14 | 48 | 32 | 53 | 0.08 | 0.14 |
| CAL20B | CSS20B | 3/4 | 14 | 53 | 32 | 53 | 0.1 | 0.18 |
| CAL25B | CSS25B | 1 | 24 | 62 | 40 | 60 | 0.17 | 0.25 |
| CAL32B | CSS32B | 1 1/4 | 28 | 66 | 48 | 78 | 0.21 | 0.38 |
| CAL40B | CSS40B | 1 1/2 | 35 | 71 | 49 | 85 | 0.24 | 0.44 |
| CAL50B | CSS50B | 2 | 51 | 77 | 54 | 96 | 0.28 | 0.68 |
| CAL65B | CSS65B | 2 1/2 | 58 | 85 | 59 | 110 | 0.44 | 0.81 |
| CAL80B | CSS80B | 3 | 72 | 92 | 60 | 127 | 0.56 | 1.13 |
| CAL100B | CSS100B | 4 | 98 | 95 | 62 | 156 | 0.99 | 1.54 |
| CAL150B | CSS150B | 6 | 150 | 102 | 62 | 240 | 1.76 | 3.2 |



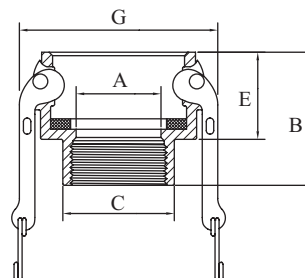
Type C Camlock - Female Camlock X Male Hosebarb

| Type C Camlock - Female Camlock X Male Hosebarb | | | | | | | | | |
|---|-----------------|---------------|-----|-----|-----|----|-----|------------------|-----------------------|
| AAP CODE | | IMPERIAL SIZE | A | B | D | E | G | ALLUMINIUM KG/PC | STAINLESS STEEL KG/PC |
| ALUMINIUM | STAINLESS STEEL | | | | | | | | |
| CAL15C | CSS15C | 1/2 | 14 | 71 | 20 | 32 | 53 | 0.08 | 0.13 |
| CAL20C | CSS20C | 3/4 | 14 | 84 | 20 | 32 | 53 | 0.12 | 0.19 |
| CAL25C | CSS25C | 1 | 20 | 98 | 26 | 40 | 60 | 0.19 | 0.29 |
| CAL32C | CSS32C | 1 1/4 | 25 | 103 | 33 | 48 | 78 | 0.28 | 0.46 |
| CAL40C | CSS40C | 1 1/2 | 31 | 121 | 39 | 49 | 85 | 0.3 | 0.56 |
| CAL50C | CSS50C | 2 | 43 | 138 | 52 | 54 | 96 | 0.45 | 0.72 |
| CAL65C | CSS65C | 2 1/2 | 55 | 149 | 65 | 59 | 110 | 0.53 | 1.08 |
| CAL80C | CSS80C | 3 | 67 | 160 | 77 | 60 | 127 | 0.72 | 1.56 |
| CAL100C | CSS100C | 4 | 92 | 170 | 103 | 62 | 156 | 1.01 | 2.26 |
| CAL150C | CSS150C | 6 | 140 | 230 | 150 | 62 | 240 | 2.03 | 4.22 |



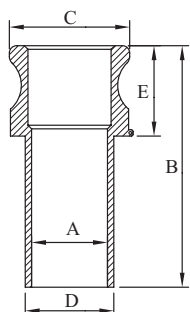
Type D Camlock - Female Camlock X Female BSP

| Type D Camlock - Female Camlock X Female BSP | | | | | | | | | |
|--|-----------------|---------------|-----|----|-----|----|-----|------------------|-----------------------|
| AAP CODE | | IMPERIAL SIZE | A | B | C | E | G | ALLUMINIUM KG/PC | STAINLESS STEEL KG/PC |
| ALUMINIUM | STAINLESS STEEL | | | | | | | | |
| CAL15D | CSS15D | 1/2 | 16 | 47 | 32 | 32 | 53 | 0.09 | 0.12 |
| CAL20D | CSS20D | 3/4 | 19 | 53 | 32 | 32 | 53 | 0.12 | 0.18 |
| CAL25D | CSS25D | 1 | 26 | 60 | 40 | 40 | 60 | 0.14 | 0.25 |
| CAL32D | CSS32D | 1 1/4 | 30 | 71 | 48 | 48 | 78 | 0.29 | 0.41 |
| CAL40D | CSS40D | 1 1/2 | 39 | 73 | 56 | 49 | 85 | 0.27 | 0.51 |
| CAL50D | CSS50D | 2 | 50 | 76 | 67 | 54 | 96 | 0.31 | 0.62 |
| CAL65D | CSS65D | 2 1/2 | 58 | 84 | 83 | 59 | 110 | 0.43 | 0.82 |
| CAL80D | CSS80D | 3 | 72 | 89 | 96 | 60 | 127 | 0.5 | 1.21 |
| CAL100D | CSS100D | 4 | 98 | 94 | 127 | 62 | 156 | 1.01 | 1.73 |
| CAL150D | CSS150D | 6 | 140 | 99 | 175 | 62 | 240 | 2 | 3.44 |



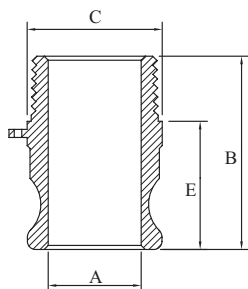
Type E Camlock - Male Camlock X Male Hosebarb

| Type E Camlock - Male Camlock X Male Hosebarb | | | | | | | | | |
|---|-----------------|---------------|-----|-----|-----|----|-----|------------------|-----------------------|
| AAP CODE | | IMPERIAL SIZE | A | B | D | E | C | ALLUMINIUM KG/PC | STAINLESS STEEL KG/PC |
| ALUMINIUM | STAINLESS STEEL | | | | | | | | |
| CAL15E | CSS15E | 1/2 | 14 | 72 | 20 | 40 | 34 | 0.03 | 0.07 |
| CAL20E | CSS20E | 3/4 | 19 | 88 | 20 | 40 | 34 | 0.06 | 0.15 |
| CAL25E | CSS25E | 1 | 24 | 102 | 26 | 46 | 38 | 0.09 | 0.22 |
| CAL32E | CSS32E | 1 1/4 | 28 | 108 | 33 | 53 | 48 | 0.14 | 0.36 |
| CAL40E | CSS40E | 1 1/2 | 35 | 129 | 39 | 56 | 56 | 0.2 | 0.49 |
| CAL50E | CSS50E | 2 | 48 | 136 | 52 | 61 | 66 | 0.25 | 0.69 |
| CAL65E | CSS65E | 2 1/2 | 58 | 159 | 65 | 65 | 80 | 0.43 | 1.13 |
| CAL80E | CSS80E | 3 | 72 | 166 | 77 | 66 | 102 | 0.5 | 1.5 |
| CAL100E | CSS100E | 4 | 98 | 177 | 103 | 70 | 132 | 0.82 | 2.25 |
| CAL150E | CSS150E | 6 | 140 | 250 | 150 | 75 | 175 | 2.28 | 5.8 |



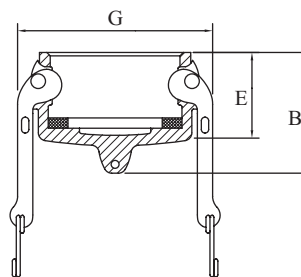
Type F Camlock - Male Camlock X Male BSP

| Type F Camlock - Male Camlock X Male BSP | | | | | | | | | |
|--|-----------------|---------------|------|-----|-----|----|------------------|-----------------------|--|
| AAP CODE | | IMPERIAL SIZE | A | B | C | E | ALLUMINIUM KG/PC | STAINLESS STEEL KG/PC | |
| ALUMINIUM | STAINLESS STEEL | | | | | | | | |
| CAL15F | CSS15F | 1/2 | 21 | 60 | 32 | 39 | 0.03 | 0.06 | |
| CAL20F | CSS20F | 3/4 | 21 | 61 | 32 | 39 | 0.06 | 0.13 | |
| CAL25F | CSS25F | 1 | 24 | 71 | 40 | 48 | 0.09 | 0.19 | |
| CAL32F | CSS32F | 1 1/4 | 28.5 | 81 | 48 | 56 | 0.16 | 0.32 | |
| CAL40F | CSS40F | 1 1/2 | 36 | 79 | 56 | 61 | 0.19 | 0.43 | |
| CAL50F | CSS50F | 2 | 45 | 87 | 67 | 62 | 0.26 | 0.57 | |
| CAL65F | CSS65F | 2 1/2 | 56.5 | 97 | 83 | 69 | 0.44 | 0.69 | |
| CAL80F | CSS80F | 3 | 73 | 100 | 96 | 74 | 0.48 | 1.19 | |
| CAL100F | CSS100F | 4 | 98 | 114 | 127 | 79 | 0.96 | 1.84 | |
| CAL150F | CSS150F | 6 | 150 | 118 | 175 | 77 | 1.52 | 2.98 | |



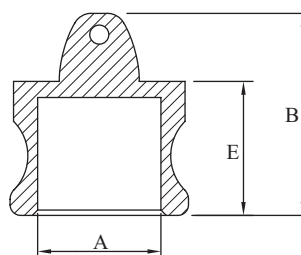
Type DC Camlock - Dust Cap

| Type DC Camlock - Dust Cap | | | | | | | |
|----------------------------|-----------------|---------------|----|----|-----|------------------|-----------------------|
| AAP CODE | | IMPERIAL SIZE | B | E | G | ALLUMINIUM KG/PC | STAINLESS STEEL KG/PC |
| ALUMINIUM | STAINLESS STEEL | | | | | | |
| CAL15DC | CSS15DC | 1/2 | 37 | 32 | 53 | 0.07 | 0.13 |
| CAL20DC | CSS20DC | 3/4 | 45 | 32 | 53 | 0.1 | 0.18 |
| CAL25DC | CSS25DC | 1 | 57 | 40 | 60 | 0.17 | 0.23 |
| CAL32DC | CSS32DC | 1 1/4 | 65 | 48 | 78 | 0.19 | |
| CAL40DC | CSS40DC | 1 1/2 | 65 | 49 | 85 | 0.22 | 0.41 |
| CAL50DC | CSS50DC | 2 | 70 | 54 | 96 | 0.26 | 0.53 |
| CAL65DC | CSS65DC | 2 1/2 | 74 | 59 | 110 | 0.41 | 0.69 |
| CAL80DC | CSS80DC | 3 | 80 | 60 | 127 | 0.57 | 1.00 |
| CAL100DC | CSS100DC | 4 | 80 | 62 | 156 | 0.88 | 1.42 |
| CAL150DC | CSS150DC | 6 | 90 | 62 | 240 | 1.6 | 2.7 |



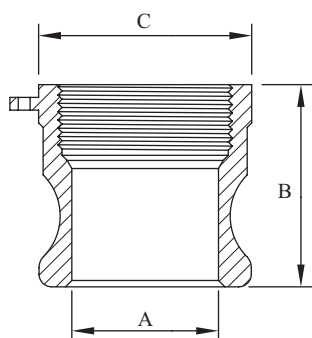
Type DP Camlock - Dust Plug

| Type DP Camlock - Dust Plug | | | | | | | |
|-----------------------------|-----------------|---------------|-----|----|----|------------------|-----------------------|
| AAP CODE | | IMPERIAL SIZE | A | B | E | ALLUMINIUM KG/PC | STAINLESS STEEL KG/PC |
| ALUMINIUM | STAINLESS STEEL | | | | | | |
| CAL15DP | CSS15DP | 1/2 | 21 | 36 | 24 | 0.02 | 0.05 |
| CAL20DP | CSS20DP | 3/4 | 21 | 38 | 24 | 0.03 | 0.07 |
| CAL25DP | CSS25DP | 1 | 24 | 50 | 30 | 0.05 | 0.12 |
| CAL32DP | CSS32DP | 1 1/4 | 29 | 55 | 38 | 0.09 | 0.22 |
| CAL40DP | CSS40DP | 1 1/2 | 36 | 59 | 41 | 0.11 | 0.29 |
| CAL50DP | CSS50DP | 2 | 45 | 64 | 43 | 0.17 | 0.42 |
| CAL65DP | CSS65DP | 2 1/2 | 57 | 68 | 45 | 0.23 | 0.56 |
| CAL80DP | CSS80DP | 3 | 73 | 70 | 52 | 0.26 | 0.77 |
| CAL100DP | CSS100DP | 4 | 98 | 76 | 48 | 0.58 | 1.21 |
| CAL150DP | CSS150DP | 6 | 155 | 85 | 62 | 1.29 | 2.9 |



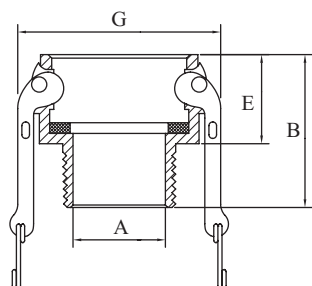
Type A Camlock - Male Camlock X Female BSP

| Type A Camlock - Male Camlock X Female BSP | | | | | | | |
|--|--------|---------------|------|----|----|---------------|------------|
| AAP CODE | | IMPERIAL SIZE | A | B | C | NYGLASS KG/PC | POLY KG/PC |
| NYGLASS | POLY | | | | | | |
| CNG20A | CPP20A | 3/4 | 21 | 41 | 32 | 0.02 | 0.02 |
| CNG25A | CPP25A | 1 | 24 | 52 | 40 | 0.03 | 0.03 |
| CNG32A | CPP32A | 1 1/4 | 28.5 | 54 | 48 | 0.04 | 0.04 |
| CNG40A | CPP40A | 1 1/2 | 36 | 57 | 56 | 0.07 | 0.07 |
| CNG50A | CPP50A | 2 | 45 | 62 | 67 | 0.11 | 0.10 |
| CNG80A | CPP80A | 3 | 73 | 71 | 96 | 0.20 | 0.19 |



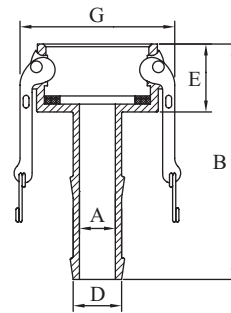
Type B Camlock - Female Camlock X Male BSP

| Type B Camlock - Female Camlock X Male BSP | | | | | | | | |
|--|--------|---------------|----|----|----|--------|---------------|------------|
| AAP CODE | | IMPERIAL SIZE | A | B | E | G | NYGLASS KG/PC | POLY KG/PC |
| NYGLASS | POLY | | | | | | | |
| CNG20B | CPP20B | 3/4 | 14 | 53 | 32 | 53.00 | 0.08 | 0.08 |
| CNG25B | CPP25B | 1 | 24 | 62 | 40 | 60.00 | 0.11 | 0.11 |
| CNG32B | CPP32B | 1 1/4 | 28 | 66 | 48 | 78 | 0.17 | 0.17 |
| CNG40B | CPP40B | 1 1/2 | 35 | 71 | 49 | 85.00 | 0.19 | 0.19 |
| CNG50B | CPP50B | 2 | 51 | 77 | 54 | 96.00 | 0.23 | 0.22 |
| CNG80B | CPP80B | 3 | 72 | 92 | 60 | 127.00 | 0.38 | 0.36 |



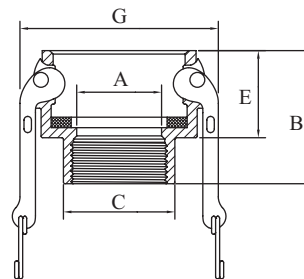
Type C Camlock - Female Camlock X Male Hosebarb

| Type C Camlock - Female Camlock X Male Hosebarb | | | | | | | | | |
|---|--------|---------------|----|-----|----|-------|--------|---------------|------------|
| AAP CODE | | IMPERIAL SIZE | A | B | D | E | G | NYGLASS KG/PC | POLY KG/PC |
| NYGLASS | POLY | | | | | | | | |
| CNG20C | CPP20C | 3/4 | 14 | 84 | 20 | 32.00 | 53.00 | 0.08 | 0.08 |
| CNG25C | CPP25C | 1 | 20 | 98 | 26 | 40.00 | 60.00 | 0.12 | 0.12 |
| CNG32C | CPP32C | 1 1/4 | 25 | 103 | 33 | 48 | 78 | 0.17 | 0.17 |
| CNG40C | CPP40C | 1 1/2 | 31 | 121 | 39 | 49.00 | 85.00 | 0.21 | 0.21 |
| CNG50C | CPP50C | 2 | 43 | 138 | 52 | 54.00 | 96.00 | 0.28 | 0.27 |
| CNG80C | CPP80C | 3 | 67 | 160 | 77 | 60.00 | 127.00 | 0.46 | 0.44 |



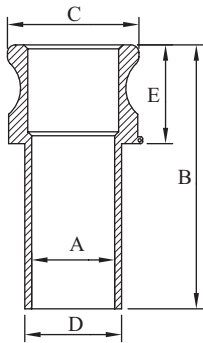
Type D Camlock - Female Camlock X Female BSP

| Type D Camlock - Female Camlock X Female BSP | | | | | | | | | |
|--|--------|---------------|----|----|----|-------|--------|---------------|------------|
| AAP CODE | | IMPERIAL SIZE | A | B | C | E | G | NYGLASS KG/PC | POLY KG/PC |
| NYGLASS | POLY | | | | | | | | |
| CNG20D | CPP20D | 3/4 | 19 | 53 | 32 | 32.00 | 53.00 | 0.08 | 0.08 |
| CNG25D | CPP25D | 1 | 26 | 60 | 40 | 40.00 | 60.00 | 0.12 | 0.12 |
| CNG32D | CPP32D | 1 1/4 | 30 | 71 | 48 | 48 | 78 | 0.17 | 0.17 |
| CNG40D | CPP40D | 1 1/2 | 39 | 73 | 56 | 49.00 | 85.00 | 0.22 | 0.22 |
| CNG50D | CPP50D | 2 | 50 | 76 | 67 | 54.00 | 96.00 | 0.24 | 0.23 |
| CNG80D | CPP80D | 3 | 72 | 89 | 96 | 60.00 | 127.00 | 0.40 | 0.38 |



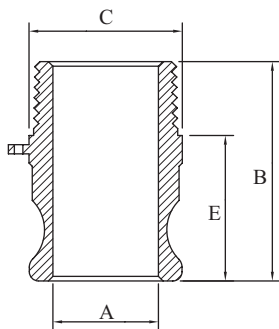
Type E Camlock - Male Camlock X Male Hosebarb

| Type E Camlock - Male Camlock X Male Hosebarb | | | | | | | | | |
|---|--------|---------------|----|-----|----|-------|--------|---------------|------------|
| AAP CODE | | IMPERIAL SIZE | A | B | D | E | C | NYGLASS KG/PC | POLY KG/PC |
| NYGLASS | POLY | | | | | | | | |
| CNG20E | CPP20E | 3/4 | 19 | 88 | 20 | 40.00 | 34.00 | 0.03 | 0.03 |
| CNG25E | CPP25E | 1 | 24 | 102 | 26 | 46.00 | 38.00 | 0.05 | 0.045 |
| CNG32E | CPP32E | 1 1/4 | 28 | 108 | 33 | 53 | 48 | 0.06 | 0.06 |
| CNG40E | CPP40E | 1 1/2 | 35 | 129 | 39 | 56.00 | 56.00 | 0.09 | 0.09 |
| CNG50E | CPP50E | 2 | 48 | 136 | 52 | 61.00 | 66.00 | 0.15 | 0.1425 |
| CNG80E | CPP80E | 3 | 72 | 166 | 77 | 66.00 | 102.00 | 0.30 | 0.28025 |



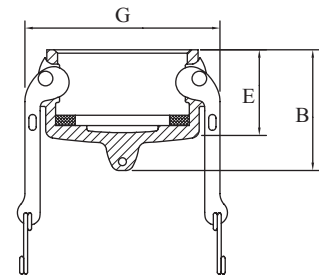
Type F Camlock - Male Camlock X Male BSP

| Type F Camlock - Male Camlock X Male BSP | | | | | | | | | |
|--|--------|---------------|------|-----|----|-------|---------------|------------|--|
| AAP CODE | | IMPERIAL SIZE | A | B | C | E | NYGLASS KG/PC | POLY KG/PC | |
| NYGLASS | POLY | | | | | | | | |
| CNG20F | CPP20F | 3/4 | 21 | 61 | 32 | 39.00 | 0.03 | 0.03 | |
| CNG25F | CPP25F | 1 | 24 | 71 | 40 | 48.00 | 0.04 | 0.04 | |
| CNG32F | CPP32F | 1 1/4 | 28.5 | 81 | 48 | 56 | 0.06 | 0.06 | |
| CNG40F | CPP40F | 1 1/2 | 36 | 79 | 56 | 61.00 | 0.09 | 0.09 | |
| CNG50F | CPP50F | 2 | 45 | 87 | 67 | 62.00 | 0.16 | 0.15 | |
| CNG80F | CPP80F | 3 | 73 | 100 | 96 | 74.00 | 0.26 | 0.25 | |



Type DC Camlock - Dust Cap

| AAP CODE | | IMPERIAL SIZE | B | E | G | NYGLASS KG/PC | POLY KG/PC |
|----------|---------|---------------|----|----|-----|---------------|------------|
| NYGLASS | POLY | | | | | | |
| CNG20DC | CPP20DC | 3/4 | 45 | 32 | 53 | 0.08 | 0.08 |
| CNG25DC | CPP25DC | 1 | 57 | 40 | 60 | 0.11 | 0.11 |
| CNG32DC | CPP32DC | 1 1/4 | 65 | 48 | 78 | 0.16 | 0.16 |
| CNG40DC | CPP40DC | 1 1/2 | 65 | 49 | 85 | 0.18 | 0.18 |
| CNG50DC | CPP50DC | 2 | 70 | 54 | 96 | 0.22 | 0.22 |
| CNG80DC | CPP80DC | 3 | 80 | 60 | 127 | 0.36 | 0.36 |



Type DP Camlock - Dust Plug

| AAP CODE | | IMPERIAL SIZE | A | B | E | NYGLASS KG/PC | POLY KG/PC |
|----------|---------|---------------|----|----|----|---------------|------------|
| NYGLASS | POLY | | | | | | |
| CNG20DP | CPP20DP | 3/4 | 21 | 38 | 24 | 0.02 | 0.02 |
| CNG25DP | CPP25DP | 1 | 24 | 50 | 30 | 0.03 | 0.03 |
| CNG32DP | CPP32DP | 1 1/4 | 29 | 55 | 38 | 0.05 | 0.05 |
| CNG40DP | CPP40DP | 1 1/4 | 36 | 59 | 41 | 0.06 | 0.06 |
| CNG50DP | CPP50DP | 2 | 45 | 64 | 43 | 0.09 | 0.09 |
| CNG80DP | CPP80DP | 3 | 73 | 70 | 52 | 0.15 | 0.14 |

